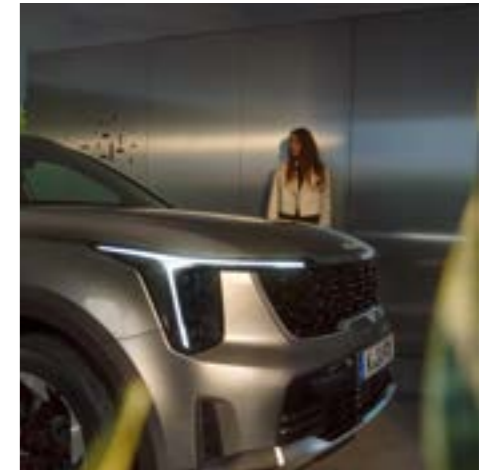


The Sorento



Movement that inspires

Key Features



Standard equipment includes

Exterior design & features

- » 19" Alloys
- » Window control (driver+ passenger+ rear) : auto up/down & safety (fr+rr)
- » Body Coloured Door Handles with Chrome Coating
- » Body Coloured Door Mirrors
- » Black Painted Side Sills
- » Chrome Coated Front & Rear Skid Plate
- » Continental Tyres
- » Electrically Folding, Adjustable & Heated Door Mirrors with Indicators Lights
- » Glossy Black Mesh Design Grille
- » Rear Privacy Glass (2nd & 3rd Row)
- » Roof Rails
- » Satin Finish Beltline
- » Spare Steel Wheel **(Diesel only)**
- » Tinted Front Glass with Sunband on Windshield
- » Trailer Package
- » Tyre Mobility Kit **(PHEV only)**
- » Power Adjustable Panoramic Sunroof with One Touch Safety

Lighting

- » Automatic Headlight Control
- » Cube LED Projection Headlights with Low Beam Assist
- » LED Daytime Running Lights
- » LED Front Fog Lights
- » LED High Mounted Brake Light
- » LED Position Lights
- » LED Rear Combination Lights
- » LED Rear Fog Lamps

Interior, seating & steering

- » Artificial Leather Seats
- » Ambient Mood Lighting
- » Driver Centre Console with Storage Compartment and Armrest
- » Driver & Front Passenger Adjustable Seats
- » Driver & Front Passenger Seat Height Adjustment
- » Driver Memory Power Adjustment Seats **(PHEV only)**
- » Front Passenger Power Adjustment Seats **(PHEV only)**
- » Driver Lumbar Support
- » Standard Door Scuff Plates
- » Shift-by-Wire Gear Selector - Forward, Reverse, Park
- » Front, 2nd & 3rd Row Overhead LED Lights
- » Front Seatback Storage
- » Heated Front & 2nd Row Seats
- » Ventilated Front Seats **(PHEV only)**
- » Heated Steering Wheel
- » Fabric Headlining
- » Net Hooks
- » Steering Wheel Mounted Paddle Shifters
- » 3-Spoke Artificial Leather Steering Wheel
- » 2nd Row Adjustable & Reclining Seats
- » 60:40 Split Folding 2nd Row Seats
- » 50:50 Split Folding 3rd Row Seats

Multimedia & information

- » 12.3" Touchscreen Navigation
- » 12.3" Driver Display Screen
- » Apple CarPlay™ and Android Auto™ with Voice Control
- » Bose Premium Sound System **(PHEV only)**
- » Digital Clock
- » Digital Key 2.0
- » Ecall
- » Front Door, Rear Door & Tweeter Speakers
- » Kia Connect Telematics
- » Multi-device Bluetooth® Connection with Voice Recognition
- » Multi-mode Climate & Media Control Panel
- » Over-The-Air (OTA) Software Update
- » Trip Computer - Distance, Consumption, Average Speed
- » Wireless Mobile Phone Charger

Security

- » Driver Controlled Central Door Locking
- » Engine Start/Stop Button with Smart Entry System
- » Engine Immobiliser
- » Visible Vehicle Identification No. (VIN)
- » Speed Sensing Auto Door Locking

Brake System

- » Front Discs - 17" (PHEV)
- » Front Discs - 18" (Diesel)
- » Rear Discs - 17"
- » Electronic Parking Brake (EPB) With Auto Hold Function

Ventilation

- » Dual Automatic Air Conditioning
- » Automatic Window Defog System
- » 2nd & 3rd Row Ventilation Duct
- » Air Filter



Key Features



Standard equipment includes

Driver Assistance

- » Blind-spot Collision Avoidance Assist (BCA) - Rear
- » Blind-spot View Monitors **(PHEV only)**
- » Drive Mode Select
- » Driver Attention Warning (DAW)
- » Electronic Chromic Rear-view Mirror (ECM)
- » Forward Collision Avoidance Assist 2 (FCA2)
- » High Beam Assist (HBA)
- » Highway Driving Assist 2 (HDA2)
- » Intelligent Speed Limit Assist (ISLA)
- » Lane Follow Assist (LFA)
- » Lane Keep Assist System (LKAS)
- » Low Washer Fluid Warning
- » Manual Speed Limit Assist (MSLA)
- » Navigation-Based Smart Cruise Control with Stop & Go Functionality
- » Parking Distance Warning Sensors (Reverse, Forward)
- » Parking Distance Warning Sensors (Side) **(PHEV only)**
- » Rain Sensing Front Wipers
- » Rear Occupant Seat Alert
- » Reversing Camera System with Dynamic Guidelines

- » Smart Power Tailgate with Adjustable Height
- » Reverse Parking Collision Avoidance **(PHEV only)**
- » 360 Surround View Monitors **(PHEV only)**
- » Terrain Mode Select (PHEV only)
- » Tyre Pressure Monitoring System (TPMS)

Active Safety System

- » Anti-Lock Braking System (ABS) with Electronic Brakeforce Distribution (EBS)
- » Electronic Stability Control (ESC) with Downhill Brake Control (DBC)
- » Hill-Start Assist Control (HAC)
- » Multi-Collision Brake (MCB)
- » Trailer Stability Assist (TSA)

Passive safety

- » All-round 3-point Seatbelts
- » Dual Horn
- » Front Centre Airbag
- » Front Passenger Airbag Cut-off Switch
- » Height Adjustable Front Seatbelts & Headrests
- » Impact Sensing Auto Door Unlocking
- » ISOFIX Child Seat Top Tethers & Anchor Fixings (2nd & 3rd Row)
- » Manual Child Lock
- » Read Door Child Locks
- » Twin Curtain Airbags
- » Twin Front Airbags

Model Comparison

EXTERIOR BODY COLOURS



Gravity Blue (B4U)



Steel Grey (KLG)



Interstellar Grey (AGT)



Aurora Black Pearl (ABP)



Volcanic Sand (BN4)



Snow White Pearl (SWP)

INTERIOR TRIM



Black Vegan Leather

WHEEL DESIGN



19" alloy wheels

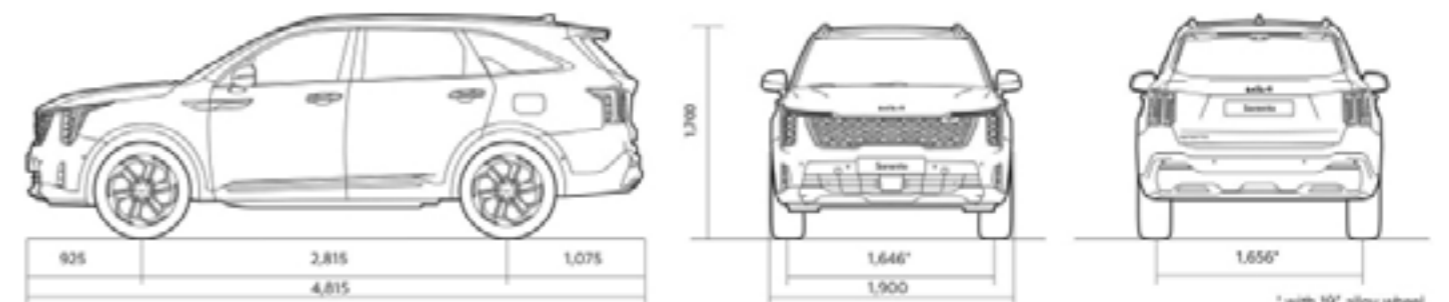


Technical specifications

	'Plug-in Hybrid'	'Diesel'
Engine	1.6 T-GDi PHEV	2.2 CRDi
Drivetrain		
Cubic capacity	1,598	2,151
Max. power, bhp at rpm	261 / 5500	199 / 3800
Max. power, ps at rpm	265 / 5500	201 / 3800
Max. torque, Nm at rpm	265 / 1500-4500	440 / 1750-2750
6 speed Automatic	●	-
8 speed DCT	-	●
Suspension & Tyres		
Front suspension	McPherson	McPherson
Rear suspension	Multi-Link	Multi-Link
19" tyres	235/55R19	235/55R19
Fuel		
Fuel Type	Petrol	Diesel
Fuel tank capacity, litres	47	67
Selective Catalytic Reduction (SCR)	-	●
SCR tank capacity, litres	-	14
BATTERY PACK		
Battery	13.8kWh Li-ion polymer battery	-
Hybrid Type	TMED	-
Electric Range EV Mode (km)	57	-
Max Power (kW)	67	-
Capacity (Ah)	38.3	-
Nominal Voltage (V)	360	-
Battery Weight (kg)	140	-
Battery Position	Under Cabin Area	-
CHARGING		
3-pin AC Emergency Charger	AC single-phase charging up to 2.3kW	-
3-pin AC Emergency Charge Time (2.2kW)	5hrs 02mins (0% → 100%)	-
Type 2 AC Charger	AC single-phase charging up to 3.3kW	-
Type 2 AC Charge Time (3.3kW)	3hrs 25mins (0% → 100%)	-

Technical specifications

	'Plug-in Hybrid'	'Diesel'
WLTP FUEL CONSUMPTION, EMISSIONS AND PERFORMANCE INFORMATION		
Maximum speed (km/h)(EV Only)	183	201
Acceleration 0-100km/h (seconds)	8.8	9.5
Fuel Consumption - Low (l/100km)	8.4	8.1
Fuel Consumption - Medium (l/100km)	5.8	6.1
Fuel Consumption - High (l/100km)	6.9	5.2
Fuel Consumption - Extra High (l/100km)	8.6	6.3
Fuel Consumption - Combined (l/100km)	7.5	6.2
Fuel Consumption - Weighted Combined (l/100km)	1.6	-
Regulated Emission Standard	Euro-6e	Euro-6e
Carbon Dioxide (CO2) Emissions (g/km)	37	161
Electric Energy Consumption, Weighted (Wh/km)	182	-
Electric Energy Consumption, Weighted (kWh/100km)	18.2	-
Electric Range , EAER Weighted (km)	55	-
Electric Range City, EAER Weighted (km)	65	-
DIMENSIONS, WEIGHT & CAPACITY		
Length (mm)	4815	
Width (mm)	1900	
Height (mm)	1700	
Wheelbase (mm)	2,815	
Overhang front / rear (mm)	925 / 1,075	
Head room first row / second row / third row	1,024 / 994 / 935	
Shoulder room first row / second row / third row	1,500 / 1,475 / 1,345	
Leg room first row / second row / third row	1,052 / 1,060 / 752	
Kerb weight (kg)	2,183	1,983
Maximum braked trailer weight (kg)	1,010	2,500
Maximum un-braked trailer weight (kg)	750	750
Maximum tow ball weight (kg)	100	100
Luggage compartment capacity, rear seats folded (5-seat position), litres	809	813
Luggage compartment capacity, all seats folded, litres	175	179



All information and specifications are correct at the time of printing and are subject to change without notification. However some of the models and features shown in this brochure may vary from the models and equipment available here in Ireland. Please consult with your dealer to ensure that the vehicle you order has the specification you require. Due to the limits of the printing process, the car body colours shown may differ slightly from actual colours.

Kia Ireland,
Unit A8 Calmount Park,
Calmount Road,
Dublin 12,
Ireland



Movement that inspires